

XUV₃₀₀

RATED THE **SAFEST** CAR IN AFRICA.



GLOBAL  NCAP

Highest Adult Safety Rating



Highest Child Safety Rating



SAFEST FOR YOU. SAFEST FOR YOUR FAMILY.

Mahindra
Rise.

The Mahindra XUV300's exemplary safety credentials remain unmatched in Africa.

Tested by the GNCAP for Africa, the XUV300 set a new benchmark for safety in Africa and now boasts with a score of 16.42 out of 17 for adult protection, giving it five out of five stars and four out of five stars for child safety.

★ **Class leading 7 airbags**
Including knee airbag, dual-front, side and curtain airbags

★ **First-in-class front parking sensors**

★ **ISOFIX Child seat mounts**

★ **Electronic Stability Program** with Dynamic Steering Torque, Roll-over Mitigation and Traction Control, together with Hill Start Assist.

★ **Front fog lamps**



★ **Disk brakes on all 4 wheels**

★ **Seat belt reminder for all seats**

★ **ABS and Electronic Brakeforce Distribution (EBD)** standard across all variants

THE XUV300 IS THE FIRST CAR IN AFRICA TO BE AWARDED THE HIGHEST 5-STAR GLOBAL NCAP SAFETY RATING AND A 4-STAR CHILD SAFETY RATING. THIS PLACES IT AS THE SAFEST CAR IN AFRICA.

7 AIRBAGS

Front, side and curtain airbags, together with a driver's knee airbag provides protection from all directions (V8).



We've cut no corners to ensure your complete safety and peace of mind.



ISOFIX CHILD SEAT ANCHORS

World standard child seat mounts and safety locks on rear doors to keep your kids safe.



HILL HOLD ASSIST

Hill hold assist technology prevents rolling back on an incline.



DISC BRAKES ON ALL WHEELS

One of the few vehicles in this class to offer full disc brakes as standard on all variants.

ESP

The Electronic Stability Programme ensures that control and stability are not compromised in tricky situations/terrain.

ABS with EBD

Anti-lock Braking System and Electronic Brakeforce Distribution is standard on all variants.



WITH ESP

WITHOUT ESP

SAFER

Safest for you, safest for your child.



BEST IN CLASS TORQUE*

Powered by an award-winning 1.5l turbo diesel engine, the XUV300 is the only compact SUV in South Africa with torque of 300Nm to ensure quick-off-the-mark take off.

The petrol version with a high-performance 1.2l turbocharged engine variant offers torque of 200Nm and power output of 81kW.

BEST IN CLASS

SIX-SPEED TRANSMISSION

Ensuring optimised gear shifts for an effortless drive.

The XUV300 provides
the perfect balance
between comfortable
ride, confident handling
and dynamic performance.
With free flowing torque
and nimble-footed
manoeuvrability, the
sheer joy of driving kicks
in the moment your foot
touches the pedal.

*Applicable to diesel variant only



FRONT PARKING SENSOR
A great help when parking or manoeuvring through tight spaces.

FIRST IN CLASS



PARK ASSIST
Rear sonar standard.
Front & Rear Sonar (W8)
Rear camera with adaptive guidelines for effortless parking (W8).

CLASS LEADING



TYRE POSITION
Displays tyre position to assist the driver when starting out.

FIRST IN CLASS



AUTO DIMMING MIRROR
The rear-view mirror automatically adjusts the intensity of light reflected at night.

CLASS LEADING



ELECTRIC SUNROOF
With anti-pinch, provides an unhindered view of the sky.

CLASS LEADING



SMART STEERING SYSTEM
Select between three different modes, COMFORT, NORMAL and SPORT to match conditions and enhance your experience.

FIRST IN CLASS



9 INCH CAPACITIVE TOUCHSCREEN INFOTAINMENT
Wireless Android Auto, Wireless Apple Car Play.
Resolution: 1024 x 600 pixels,
CPU: Quad Core, up to 1.5 GHz
Software: Android 10, 15 band Equalizer

ADVANCED

LED Turn indicators on ORVMs (Outside rear-view mirrors)

Stylish roof rails

Floating roof design

Striking LED tail lamps

Sporty 16" diamond-cut alloys

Sturdy side cladding



Projector headlamps with distinctive DRLs (Daytime running lamps)

Aggressive front grille

Like all Mahindra SUVs, the refreshed XUV300 has elements of the group's signature design language that includes full volumes, sculpted sections and muscled surfaces. It also has the distinctive Mahindra bold grille with chrome highlights on the highest specification level which includes the multi-spoke, diamond cut 16' alloy wheels.

PREMIUM UPHOLSTERY

Premium leatherette seats provide a level of luxury and comfort way ahead of its class.



ALL ROUND SOUND

Four speakers and two tweeters provide a great surround sound experience.



STEERING MOUNTED CONTROLS

Cruise control, phone and audio controls at your fingertips.



6-WAY ADJUSTABLE DRIVER'S SEAT

Ensures your comfort however long the journey.



FRONT ARMREST WITH STORAGE

The easily accessible storage between the front seats will accommodate a 10" tablet.



FLAT 2ND ROW FLOOR

Providing comfortable seating for all three passengers in the 2nd row.



AMPLE SPACE WITH MAXIMUM FLEXIBILITY

Space for five adults to sit comfortably without compromise, with the added flexibility of 60/40 folding second row for when you need more load space. The adjustable boot floor also provides the option of a deeper space for more difficult loads



Enjoy a world-class spacious interior with a width of 1821mm and wheelbase of 2600mm... in a word:

LUXURIOUS

Dual zone fully automatic temperature control.

Allowing driver and co-driver to set different temperatures to suit their preference.

CLASS LEADING



Dress up your ride with genuine accessories.

MUD FLAP SET

Subtle, integrated design to keep road spatter where it belongs.

AS00048



DOOR EDGE PROTECTOR

A necessity in any close parking area.

AS00024



SIDE CLADDING

Adds another layer of tough.

AS00017



BUMPER CLADDING SET

Accentuate the aggressive front grille and imposing attitude of your XUV300

AS00013



DOOR SILL

Prevents unsightly scuffing.

AS00064



DOOR PROTECTOR

Keep your door panels safe from other peoples door edges.

AS00042



16" DIAMOND CUT ALLOYS

Add sophistication to your wheels.

AS00008



16" INCH SILVER ALLOYS

Get the look of alloys for your steel rims.

AS00052



CAR COVER

Keep your baby protected from the elements.

AS00044

FRONT PARKING SENSOR

Leave nothing to chance.

AW10053



TABLET HOLDER

A great way to keep your passengers entertained.

AW10187



REAR REFLECTORS

An added level of visibility.

AS00116

REAR PARKING CAMERA

Makes getting in and out of tight spots a breeze.

AX00128



FOG LAMP SET

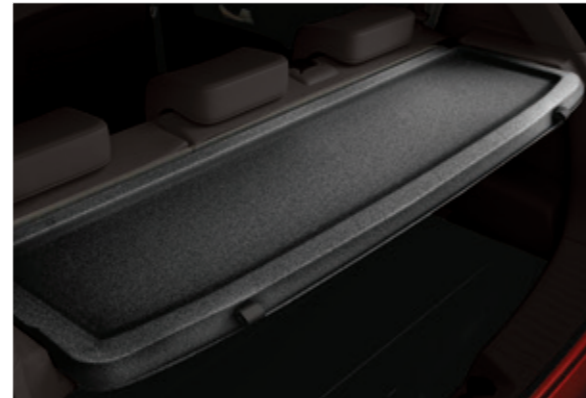
Ensures people will see you even in bad weather.

AS00049

LUGGAGE COVER

Keep your luggage away from prying eyes.

AS00047



SEAT COVER SETS

Add extra sophistication and comfort with these sporty covers (W6 only).

AS00093

AS00095

Technical Specifications		Turbo Diesel		Turbo Petrol			
Engine & transmission	Engine capacity Max power KW @ r/min Max torque NM @ r/min Transmission	1497 cm ³ 85.8 kW @ 3750 r/min 300Nm @ 1500-2500 r/min 6 speed manual	1197 cm ³ 81 kW @ 5000 r/min 200Nm @ 2000-3500 r/min 6 speed manual				
Brakes	Front brakes Rear brakes	Disc Disc	Disc Disc				
Suspension, tyres, turning radius	Front suspension Rear suspension Turning radius Tyre size	Mac-Pherson strut with anti roll bar Twist beam suspension with coil spring 5.3 m W8: 205/65R16 Diamond Cut Alloy W4: 205/65R16 Alloy					
Dimensions	Length Width Height Wheelbase Fuel tank capacity	3995 mm 1821 mm 1627 mm (W4: 1617mm) 2600 mm 42 litres					
Performance		W4 Petrol	W4 Petrol SE	W6 - Diesel	W6 - Petrol	W8 - Diesel	W8 - Petrol
6-speed transmission	Manual	Manual	Manual	Manual	Manual	Manual	Manual
1.2 petrol	●	●	–	●	–	–	●
1.5 diesel engine	–	–	●	–	●	–	–
Fuel consumption (combined cycle)	6,33L/100km	6,33L/100km	5L/100km	6,33L/100km	5L/100km	6,33L/100km	6,33L/100km
CO ₂ (g/km)	151g/km	151g/km	127,8g/km	151g/km	127,8g/km	151g/km	151g/km
Style		W4 Petrol	W4 Petrol SE	W6 - Diesel	W6 - Petrol	W8 - Diesel	W8 - Petrol
Wheels	205/65 R16 Steel	205/65 R16 Alloy	205/65 R16 Alloy	205/65 R16 Alloy	205/65 R16 Alloy DC	205/65 R16 Alloy DC	205/65 R16 Alloy DC
Spare wheel	205/65 R16 Steel	205/65 R16 Steel	205/65 R16 Steel	205/65 R16 Steel	205/65 R16 Steel	205/65 R16 Steel	205/65 R16 Steel
LED day time running lamps	–	–	–	–	●	●	●
Piano black door trims	–	–	–	–	●	●	●
Upper grille	Black	Black	Silver	Silver	Chrome	Chrome	Chrome
Lower grille	Black	Black	Silver	Silver	Chrome	Chrome	Chrome
LED tail lamp	●	●	●	●	●	●	●
Fashion rails	–	–	Black	Black	Black	Black	Black
Body coloured door handles and ORVMs	●	●	●	●	●	●	●
Inside door handles	Black	Black	Black	Black	Chrome	Chrome	Chrome
Sill and wheel arch cladding	●	●	●	●	●	●	●
Door cladding	–	–	–	–	●	●	●
LED turn Indicators on ORVM	–	–	–	–	●	●	●
Spoiler	–	–	●	●	●	●	●
Front and rear skid plates	●	●	Black	Black	Silver	Silver	Silver
Front scuff plates	–	–	Black	Black	Black	Black	Black
Rear Bumper	Black	Black	Black	Black	Black	Black	Black
Comfort & Convenience		W4 Petrol	W4 Petrol SE	W6 - Diesel	W6 - Petrol	W8 - Diesel	W8 - Diesel
Height adjustable drivers seat	–	–	–	–	–	●	●
Height adjustable front seatbelt	●	●	●	●	●	●	●
Seat upholstery	Fabric	Fabric	Fabric	Fabric	Black S/leather	Black S/leather	Black S/leather
4 speakers	●	●	●	●	●	●	●
2 tweeters	–	–	–	–	●	●	●
Illuminated sunvisor with vanity mirrors	–	–	–	–	●	●	●
Sunglass holder	–	–	–	–	●	●	●
Steering mounted controls	–	–	●	●	●	●	●
Cruise control	–	–	●	●	●	●	●
Cupholders	2	2	2	2	4	4	4
Bungee strap for stowage	–	–	–	–	●	●	●
Bottle holder on all 4 doors	●	●	●	●	●	●	●
Console roof lamps	–	–	–	–	●	●	●
Centre roof lamp	●	●	●	●	●	●	●
Adjustable boot floor	–	–	–	–	●	●	●
60/40 second row split	●	●	●	●	●	●	●
Leather steering and gear lever knob	–	–	–	–	●	●	●
Electric sunroof with anti pinch	–	–	–	–	●	●	●
Package tray	●	●	●	●	●	●	●
Air conditioner	●	●	●	●	Auto	Auto	Auto

Technology	W4 Petrol	W4 Petrol SE	W6 - Diesel	W6 - Petrol	W8 - Diesel	W8 - Petrol
Start stop button	–	–	–	–	●	●
Auto dimming IRVM	–	–	–	–	●	●
Touch screen infotainment	(3.5" Radio)	9" Display	9" Display	9" Display	9" Display	9" Display
Extended power window operation	–	–	–	–	●	●
USB audio points	1	1	1	1	2	2
Front and rear power windows	●	●	●	●	●	●
1 touch lane change indicator	–	–	–	–	●	●
Micro hybrid technology	–	–	–	–	●	●
Smart steering system	–	–	●	●	●	●
Tyre Pressure Warning	–	–	–	–	●	●
Follow me home and lead me to vehicle lamps	–	–	–	–	●	●
Intelligent light sensing headlamps	–	–	–	–	●	●
Smart rain sensing wipers	–	–	–	–	●	●
Tyre Direction System	●	●	●	●	●	●
Driver power window with express down	●	●	●	●	Express up & down & antipinch	Express up & down & antipinch
Electrical adjustable ORVMs	●	●	●	●	Foldable and adjustable	Foldable and adjustable
Apple Carplay/Android Auto	–	●	●	●	●	●
Projector headlamps	–	–	–	–	●	●
Built in navigation system	–	●	●	●	●	●
Bluetooth/aux/USB connectivity	●	●	●	●	With, dual	With, dual
Central locking	●	●	●	●	●	●
Passive keyless entry	–	–	–	–	●	●
Key with remote	–	–	–	–	●	●
Supervision cluster with TFT screen	–	–	–	–	●	●
Electrically operated HVAC	●	●	●	●	–	–
Dual zone FATC	–	–	–	–	●	●
Safety	W4 Petrol	W4 Petrol SE	W6 - Diesel	W6 - Petrol	W8 - Diesel	W8 - Petrol
Number of Airbags	2	2	2	2	7	7
ISOFIX child seat anchors	●	●	●	●	●	●
ESP with roll over mitigation	–	–	–	–	●	●
Corner braking control	–	–	–	–	●	●
Front fog lamps	–	–	–	–	Fr	Fr
Collapsible steering	●	●	●	●	●	●
Seatbelt reminder for co-driver	●	●	●	●	●	●
3 point seatbelt for middle seat in second row	●	●	●	●	●	●
Rear defogger wash and wipe	–	–	–	–	●	●
Front seatbelt with pretensioner and load limiter	●	●	●	●	●	●
Speed sensing door lock	●	●	●	●	●	●
Impact sensing unlock	●	●	●	●	●	●
High mounted stop lamp	●	●	●	●	●	●
ABS with EBD	●	●	●	●	●	●
Immobiliser	●	●	●	●	●	●
Panic braking signal	–	–	●	●	●	●
Anti theft alarm	–	–	–	–	●	●
Second row seatbelt reminder	–	–	–	–	●	●
Passenger airbag deactivation switch	●	●	●	●	●	●
Hill hold assist	–	–	–	–	●	●
Park assist	Rear sonar	Rear sonar	Rear sonar	Rear sonar	Front + rear sonar, rear camera	Front + rear sonar, rear camera
Knee airbag	–	–	–	–	Driver	Driver
Warranty and Service plan	W4 Petrol & SE	W6 - Diesel	W6 - Petrol	W8 - Diesel	W8 - Petrol	W8 - Petrol
Warranty	5yrs \150 000km				5 Year\150 000 km	
Service plan**	3Yrs \ 50 000km				5 Year\90 000	

Please note: This information is correct at the time of going to press, but performance may differ in conditions other than those in which tests were conducted. In view of our policy of continuously improving our products, we reserve the right to alter specifications and designs without prior notice and without liability. Please consult your local dealer for the latest specifications. *** Phone dependent.

** Service plan not available to vehicle sales in Botswana, Zambia and Zimbabwe.



Customer Care: (012) 661 3159 / (012) 661 3161
Email: customercare@mahindra.co.za
www.mahindra.co.za

First Floor Block A Southdowns Ridge Office Park
John Vorster Drive (corner Nelmapius)
Southdowns Centurion
P O Box 69079 Highveld Park
0169 South Africa



PLEASE NOTE: Some of the equipment shown in this brochure may not be available on all models or in all markets. Some finishes and specifications are also not available in all markets. All specifications are subject to change without notice. Please contact your local dealer for the latest information.

DATE OF PUBLICATION: MARCH 2022
PART NO: BROCHURE 15312



Pearl White

DSat Silver

Dynamic Red



Aquamarine [on W4 only]

MAHINDRA RECOMMENDS YOU USE ONLY



The new mzanzi app is now available for care, maintenance and a lot more

